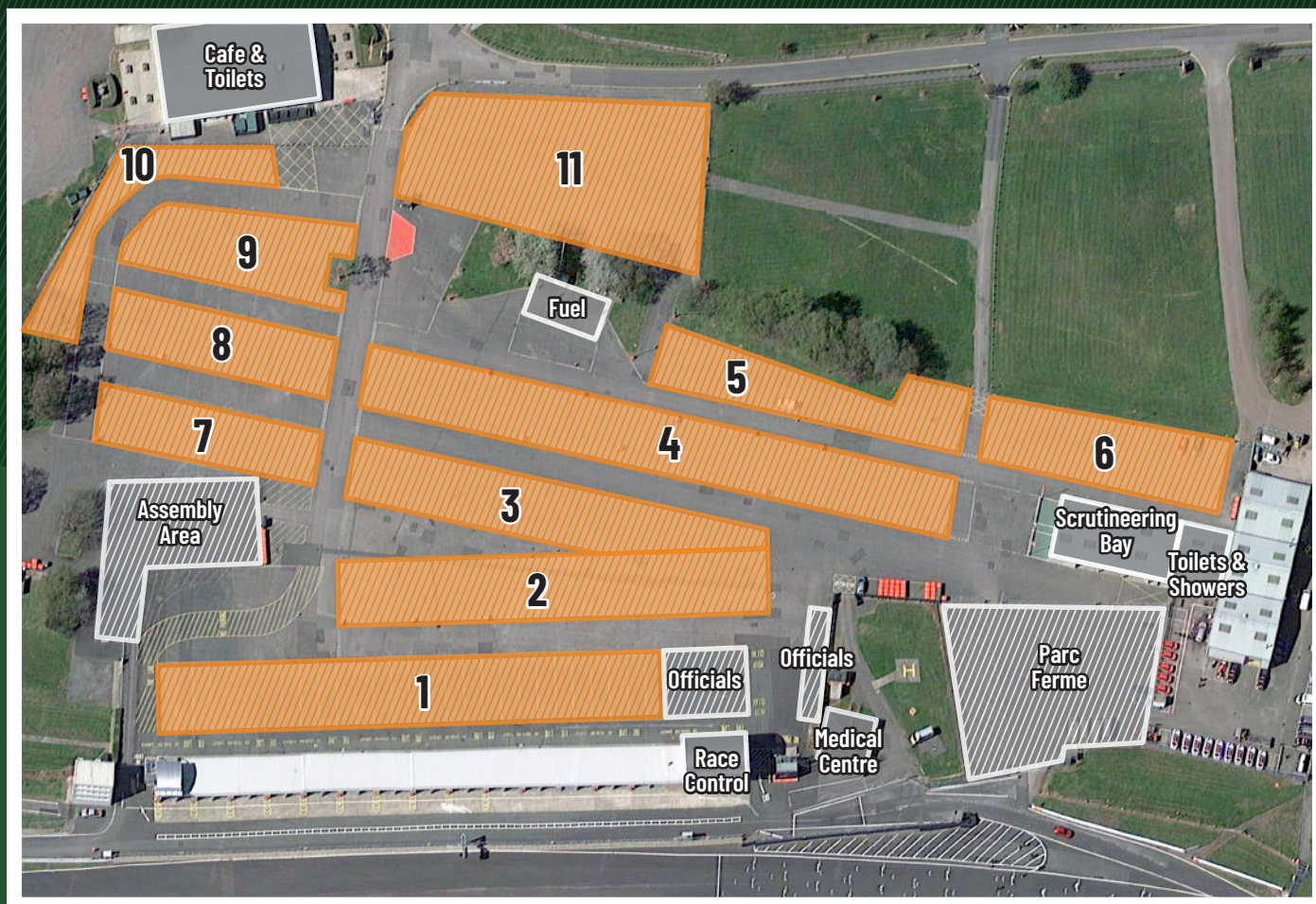




20th September 2025



AREA

FORMULA

1	Cars in Garages (Club Enduro)	7	Mighty Mini
2	Ma7da	8	Classic Stock Hatch
3	Ma7da	9	Classic Stock Hatch
4	Locost	10	Classic Stock Hatch
5	MR2C	11	Vauxhall Display Area
6	MR2C		

For garage allocation please see separate plan

PLEASE NOTE: Any competitor/team who may have stationed themselves in the incorrect place in the paddock and has refused to move when asked by a 750MC official or their co-ordinator, will be reported to the Clerk of the Course.
The roadways within the Paddock Area must be kept clear of all vehicles at all times. It is prohibited to park vehicles so that they are backed up against the pit garage doors.



motor
sport
UK

**RACE
WITH
RESPECT**